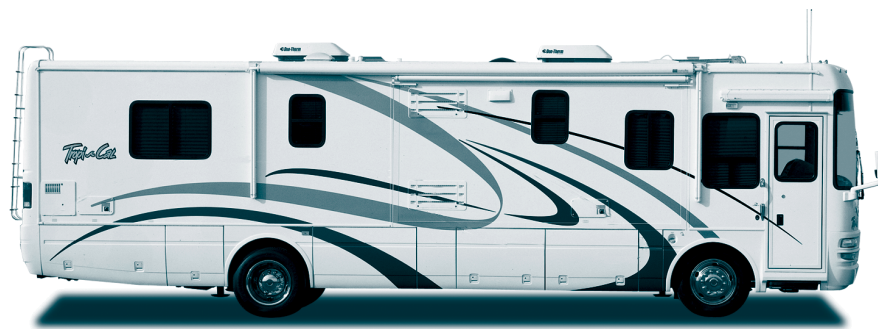


Tropicana

T W O T H O U S A N D F O U R



SPECIFICATIONS & FLOORPLANS



WEIGHTS	T350	T370	T396
Freightliner Chassis			
Gross Vehicle Weight Rating	27,910 lbs.	27,910 lbs.	27,910 lbs.
Gross Combined Weight Rating	32,910 lbs.	32,910 lbs.	32,910 lbs.
Front Gross Axle Weight Rating	10,410 lbs.	10,410 lbs.	10,410 lbs.
Rear Gross Axle Weight Rating	17,500 lbs.	17,500 lbs.	17,500 lbs.
Unloaded Vehicle Weight	23,480 lbs.	24,060 lbs.	24,700 lbs.
Maximum Carrying Capacity	4,430 lbs.	3,850 lbs.	3,210 lbs.
Cargo Carrying Capacity (CCC)	2,782 lbs.	2,202 lbs.	1,562 lbs.
MEASUREMENTS	T350	T370	T396
Wheelbase	208"	228"	252"
Overall Length	35' 5"	37' 1"	39' 1"
Exterior Height	12' 1"	12' 1"	12' 1"
Exterior Height (with Satellite Option)	12' 5"	12' 5"	12' 5"
Interior Height	79½"	79½"	79½"
Interior Width	98"	98"	98"
Exterior Width	102"	102"	102"
TANK CAPACITIES	T350	T370	T396
Water Heater	10 gal.	10 gal.	10 gal.
Gray Tank	60 gal.	60 gal.	60 gal.
Black Tank	40 gal.	40 gal.	40 gal.
Fresh Water Tank(s)	95 gal.	95 gal.	95 gal.
LP-Gas Tank (Volume W.C.)	47.7 gal.	47.7 gal.	47.7 gal.

Due to continued product improvement, National R.V., Inc. reserves the right to change materials, colors, specifications and prices at any time without notification. Copyright © 2004 by National R.V., Inc. 01/04

BODY CONSTRUCTION

- Duraframe® patented steel sub floor construction
- Steel framed laminated floor
- Steel framed crowned laminated fiberglass roof
- Steel framed laminated fiberglass high gloss walls
- Custom vinyl exterior graphics
- Front and rear molded high gloss fiberglass caps
- Soft fabric ceiling material
- Electric slide-out rooms
- Insulated fiberglass exterior storage compartment doors with integrated paddle latches and gas struts
- Aluminum rear ladder
- D-Ring tie downs in basement storage compartments
- Automotive undercoating
- Steel insulated front bulkhead

COCKPIT FEATURES

- Big button AM/FM cassette stereo and CD with four speakers
- Multi-disc CD changer
- Driver and passenger bullet reading lights with switches
- Custom dash in dark gray matte grid finish with full gauge package
- Convenience tray
- Pantographic windshield wipers
- Power steering
- Electronic cruise control
- 18" tilt and telescoping steering wheel
- Roof mounted dual chrome trumpet air horns
- Rear vision system with microphone
- White power controlled heated exterior mirrors
- Hydraulic leveling jacks with dash mounted controls
- Passenger workstation with 12V/120V receptacle and phone jack in console
- Electric sunvisors
- Cup holders
- Two 2-speed dash fans
- Electric stepwell cover
- Wraparound privacy curtain with easy reach wand
- Illuminated stepwell

APPLIANCES & ACCESSORIES

- RCA® 27" flat screen TV in cockpit
- RCA® DVD player
- Exterior entertainment package: Includes a 19" RCA® stereo TV, AM/FM stereo with CD on a swivel base located in an exterior compartment on a full-extension slide tray with two fixed speakers
- Home theater entertainment package: Includes an RCA® DVD digital receiver and five speaker/subwoofer system
- RCA® 19" TV with front A/V jacks in bedroom
- 8 cu. ft. double door refrigerator and pantry

- 10 cu. ft. double refrigerator with ice maker (with pantry)
- 12 cu. ft. side-by-side refrigerator with ice maker (replaces the slide-out pantry)
- High output three burner cook top with flush mount Corian® range cover
- 21" high output three burner range and oven
- GE® SpaceSaver convection microwave oven with carousel, built-in light and fan
- Cable TV hook-up and multiple telephone jacks
- Winegard® TV antenna
- Winegard® video control box with antenna boost
- Kingdome® automatic stationary satellite dish

FURNITURE

- Kustom Fit® soft touch OptimaLeather® 6-way power driver recliner seat with swivel base and Kustom Fit® soft touch OptimaLeather® manual passenger recliner seat with swivel base
- Kustom Fit® soft touch OptimaLeather® 6-way power passenger recliner seat with swivel base
- Kustom Fit® Wonder-Bed® fabric sleeper sofa with slide-in armrests
- Kustom Fit® Wonder-Bed® soft touch OptimaLeather® sleeper sofa with slide-in armrests
- Kustom Fit® Wonder-Bed® soft touch OptimaLeather® J-sofa
T396 ONLY
- Kustom Fit® freestanding fabric swivel Euro-recliner chair with ottoman
N/A T396
- Kustom Fit® freestanding soft touch OptimaLeather® swivel Euro-recliner chair with ottoman (included in Heritage or Sterling packages)
N/A T396

INTERIORS

Throughout Coach

- Maple paneling and doors
- Cherry paneling and doors
- Solid wood raised panel cabinet doors in living area, flat panel doors on base cabinets in dressing and bedroom
- Deluxe overhead storage doors with telestrut hardware; positive catches on all other doors
- Drawers with ball bearing roller guide design
- Dual lavy sinks

Cockpit Area

- Floor mats
- Ceramic tile flooring at front entry

Living Area

- Plush carpet with deluxe pad
- Day/night shades with designer valances
- Booth dinette with slide-out storage drawers

- Dining table/cabinet with built-in table extension, two low-back wooden chairs and two wooden folding chairs

Kitchen Area

- Corian® kitchen countertop with Corian® sink covers
- Corian® countertop extension
N/A ON T396
- Swanstone® high-line under-mount kitchen sink
- Slide-out pantry
- Wastebasket
- Silverware organizer
- Beveled mirror galley backsplash
- Ceramic tile flooring
- Venetian blind and valance

Bath Area

- Ceramic tile flooring
- Insulated skylight in shower
- Towel bars, towel rings and soap dishes
- Medicine cabinet
- Window, valance and blind in the private toilet room
- Stylish, decorative wall border

Bedroom Area

- Plush carpet with deluxe pad
- Day/night shades with designer valances
- "Sandpiper Deluxe" residential-style innerspring pillow top queen size mattress (60" x 80")
- Pull out storage drawers below bed
- Bedspread, pillows and shams
- Cedar lining in wardrobe
- Rear wardrobe with mirrored sliding doors
- Wall dresser with drawers and laundry hamper
N/A ON T350
- Hardwood louvered washer/dryer doors below the TV

ELECTRICAL SYSTEMS & LIGHTS

- 50 Amp 120V distribution panel and cord
- 50 Amp shore power cord
- 12V push button circuit breaker distribution panel
- 40 watt solar panel
- Onan® 7.5 kW Quiet Diesel generator
- 2,000 watt inverter/converter with remote on/off switch
- Four 6V deep cycle house batteries
- Slide-out battery tray
- Two 1900 CCA 12V maintenance-free chassis batteries
- Systems monitor panel
- Battery disconnect switch
- Porch light
- 12V/120V patio receptacle and telephone jack
- Three water pump switches (kitchen, bath and service station)
- Decorative overhead dining light fixture
- Decorative overhead bedroom light fixtures
- Cosmetic light in bathroom
- Stylish designer decorative light fixtures in living area
- Courtesy light at entry door switch panel

- Fluorescent lights in ceiling with wall mounted switches
- Lights in exterior storage compartments

PLUMBING & LPG SYSTEMS

Coach Exterior

- Heated and insulated holding and water tanks
- Pressurized water fill with regulator
- On demand water system and water pump
- Water heater bypass valve
- Winterization anti-freeze inlet to pump
- Holding tank rinsing system (black tank only)
- Outside shower

Kitchen Area

- Water filter/faucet in kitchen
- Single lever faucet with detachable gooseneck sprayer

Bedroom/Bathroom Area

- Low-profile porcelain toilet with sprayer
- Designer glass shower enclosure
- One piece fiberglass tub/shower
VARIES PER MODEL
- Single lever brass faucet
- Pre-plumbed for washer/dryer
- Combination washer/dryer
- 10 gallon, quick-recovery water heater with direct spark ignition (gas/electric)

SAFETY FEATURES

- Fire extinguisher
- Deadbolt lock on entrance door
- 120V GFI protected circuits (kitchen, bath and exterior)
- Smoke, carbon monoxide (CO) and LPG detectors
- Driver and passenger three point seatbelts
- Emergency exit window
- Interior assist handle
- Deluxe acrylic exterior assist handle

WINDOWS, DOORS & AWNINGS

- Insulated and tinted dual pane windows
- Power double entrance step with light and anti-skid surface
- Entrance door with clear glass, shade and screen door
- Tinted skylight in bathroom
- Ventilated windows on sides of slide-out rooms (lounge slides only)
- Entry door awning
- Electric patio awning with metal cover
- Slide-out topper awnings
- Living room and bedroom window awning package

CLIMATE CONTROL

- Dual 13,500 BTU Duo-Therm® low profile Penguin® air conditioners with in-ceiling ducting
- Dual 20,000 BTU furnaces
- 12V roof exhaust fan in bathroom
- 12V Fan-Tastic® Vent with wall thermostat and rain sensor in living area
- Dash automotive heating and air conditioning system with defroster

AVAILABLE UPGRADE PACKAGES

Heritage Package:

Includes Maple standard with available Cherry wood décor, custom paint and vinyl exterior graphics, Corian® counter tops, ceramic tile floor with designer accent in entry, kitchen and bathroom areas, upgraded fabrics and soft touch OptimaLeather® Euro-recliner with ottoman

The following package can be added to the Heritage package:

Desert Diamond Package:

Full body paint with four colors, four aluminum rims, chrome mirrors and black awning hardware, vents and ladder.

Sterling Package:

Includes stainless steel appliances and hardware, Maple standard with available Walnut wood décor, custom paint and vinyl exterior graphics, Corian® counter tops, ceramic tile floor with designer accent in entry, kitchen and bathroom areas, upgraded fabrics, soft touch OptimaLeather® Euro-recliner with ottoman

The following package can be added to the Sterling package:

Graphite Diamond Package:

Full body paint with four colors, four aluminum rims, chrome mirrors and black awning hardware, vents and ladder.

FREIGHTLINER® XC SERIES CHASSIS

<i>Chassis Design</i>	Raised rail
<i>Steering Gear</i>	TRW TAS 55 power steering gear with 51° turning angle and 20.4:1 steering ratio
<i>Tires</i>	Michelin® radial tires 255/80R22.5 14 ply
<i>Wheels</i>	Steel wheels with stainless steel wheel simulators and valve extensions; 10 lugs
<i>Service Brakes</i>	Full air brakes with ABS; Wabco 4S/4M; 15x4 front drums, 16.5x7 rear drums
<i>Alternator</i>	Delco Remy® 130 Amp alternator
<i>Chassis Batteries</i>	Two Alliance® 1131MF - min 1900 CCA Batteries
<i>Front Suspension</i>	Neway® AS-120 front - 10,500 lb. capacity
<i>Rear Suspension</i>	Neway® ADL rear - 17,500 lb. capacity
<i>Fuel Tank Capacity</i>	100 gallon fuel tank
<i>Towing Equipment</i>	5,000 lb. Class III hitch receiver with skid bar and six-pin electrical connector
<i>Chassis Warranty</i>	2 years/50,000 miles

CATERPILLAR® 3126E ENGINE

<i>Displacement</i>	7.2L
<i>Peak Horsepower</i>	330 HP @ 2,200 RPM
<i>Peak Torque</i>	860 lb/ft torque @ 1,440 RPM
<i>Engine/Exhaust Brake</i>	Pac Brake® exhaust brake
<i>Engine Warranty</i>	5 years/unlimited miles

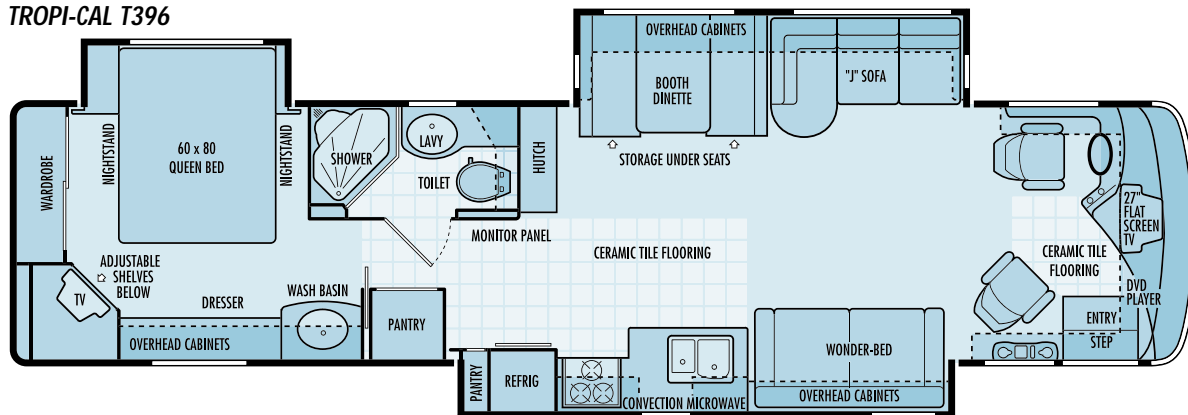
ALLISON® MH 3000 TRANSMISSION

<i>Transmission Type</i>	Six speed automatic with 2 overdrive gears
<i>Gear ratios</i>	3.49:1 First gear
	1.86:1 Second gear
	1.41:1 Third gear
	1.00:1 Fourth gear
	0.75:1 Fifth gear
	0.65:1 Sixth gear
	-5.03:1 Reverse
<i>Transmission Shifter</i>	Touch pad electronic shifter with digital display
<i>Transmission Warranty</i>	5 years/unlimited miles

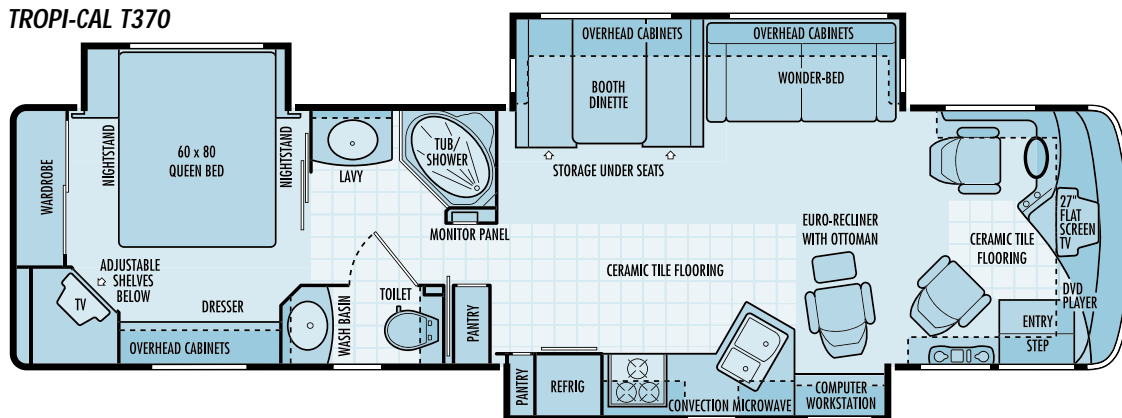
Due to continued product improvement, National R.V., Inc. reserves the right to change materials, colors, specifications and prices at any time without notification. Copyright © 2004 by National R.V., Inc. 01/04

TROPI-CAL 2004 FLOORPLANS

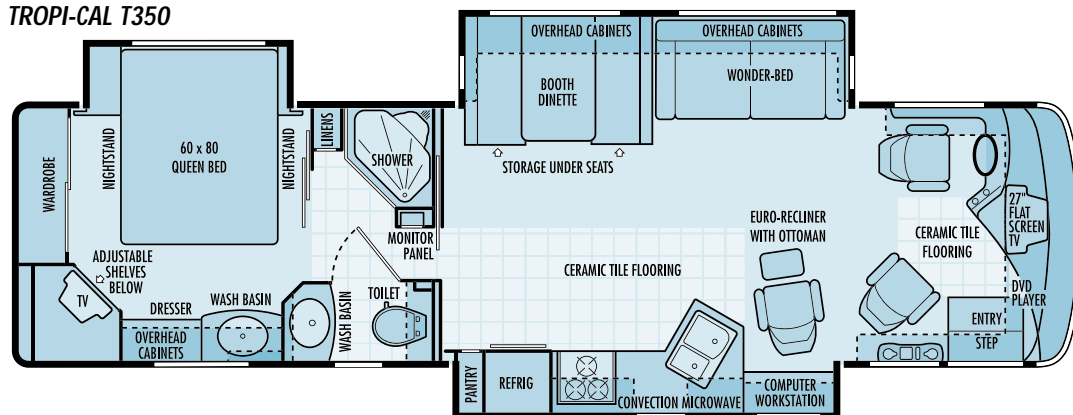
TROPI-CAL T396



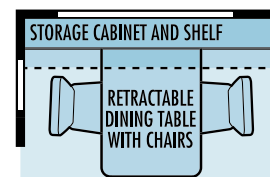
TROPI-CAL T370



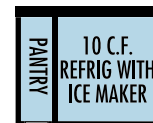
TROPI-CAL T350



AVAILABLE OPTIONS:



Retractable dining table with chairs
on T350, T370 and T396
REPLACES BOOTH DINETTE



10 cu. ft. refrigerator with ice maker
on T350, T370 and T396
REPLACES STANDARD REFRIGERATOR



12 cu. ft. refrigerator with ice maker
on T350, T370 and T396
REPLACES STANDARD PANTRY
AND REFRIGERATOR